

Catalogo Profili Alluminio



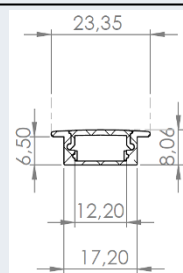
WIRING SAS Via Redipuglia, 8 20010 Bareggio (Milano) ITALY

Telefono: +39 (02) 97316712 Fax +39 02 90278978 info@wiring.it

HS-ALPXXX-YY

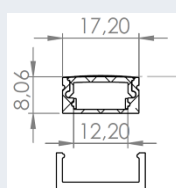
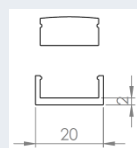
Profili in Alluminio

US-ALP001 Profilo in alluminio da incasso



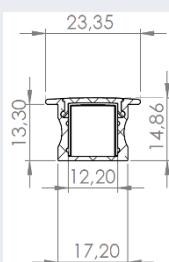
- | | |
|-------------------|--|
| 1) HS-ALP001-LS | Estruso alluminio anodizzato |
| 2) HS-OPAL-001-LS | PMMA diffusore opalescente satinato |
| 3) HS-SETR-001-LS | PMMA diffusore semi-trasparente satinato |
| 4) HS-TRAN-001-LS | PMMA trasparente |
| 5) HS-CAP-001-LS | Tappo chiuso |
| 6) HS-CAP-101-LS | Tappo con foro passaggio cavi |

US-ALP002 Profilo slim in alluminio lineare



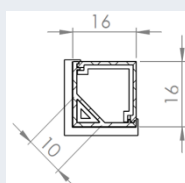
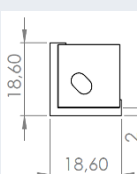
- | | |
|-------------------|--|
| 1) HS-ALP002-LS | Estruso alluminio anodizzato |
| 2) HS-OPAL-2+3-LS | PMMA diffusore opalescente satinato |
| 3) HS-SETR-2+3-LS | PMMA diffusore semi-trasparente satinato |
| 4) HS-TRAN-2+3-LS | PMMA trasparente |
| 5) HS-CAP-002-LS | Tappo chiuso |
| 6) HS-CAP-102-LS | Tappo con foro passaggio cavo |
| 7) HS-CLIP-002-LS | Clip fissaggio a muro |

US-ALP003 Profilo in alluminio da incasso



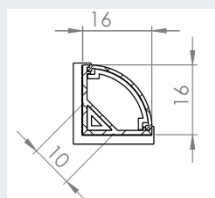
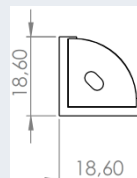
- | | |
|-------------------|--|
| 1) HS-ALP003-LS | Estruso alluminio anodizzato |
| 1) HS-OPAL-2+3-LS | PMMA diffusore opalescente satinato |
| 2) HS-SETR-2+3-LS | PMMA diffusore semi-trasparente satinato |
| 3) HS-TRAN-2+3-LS | PMMA trasparente |
| 4) HS-CAP-003-LS | Tappo chiuso |
| 5) HS-CAP-103-LS | Tappo con foro passaggio cavo |

US-ALP004 Profilo d'angolo in alluminio



- | | |
|-------------------|--|
| 1) HS-ALP004-LS | Estruso alluminio anodizzato |
| 2) HS-OPAL-004-LS | PMMA diffusore opalescente satinato |
| 3) HS-SETR-004-LS | PMMA diffusore semi-trasparente satinato |
| 4) HS-TRAN-004-LS | PMMA trasparente |
| 5) HS-CAP-004-LS | Tappo chiuso |
| 6) HS-CAP-104-LS | Tappo con foro passaggio cavo |
| 7) HS-CLIP-004-LS | Clip fissaggio a muro |

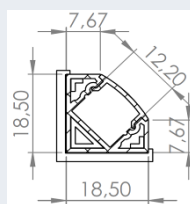
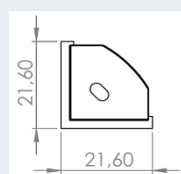
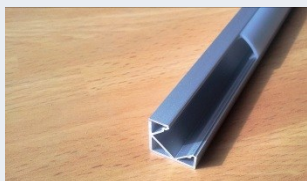
US-ALP005 Profilo d'angolo in alluminio



- | | |
|-------------------|---|
| 1) HS-ALP004-LS | Estruso alluminio anodizzato |
| 2) HS-OPAL-005-LS | PMMA diffusore opalescente satinato |
| 3) HS-SETR-005-LS | PMMA diffusore semitrasparente satinato |
| 4) HS-TRAN-005-LS | PMMA trasparente |
| 5) HS-CAP-005-LS | Tappo chiuso |
| 6) HS-CAP-105-LS | Tappo con foro passaggio cavo |
| 7) HS-CLIP-005-LS | Clip fissaggio a muro |

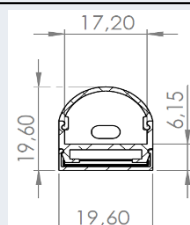
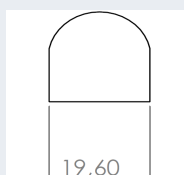
Profili in Alluminio

US-ALP006 Profilo d'angolo in alluminio



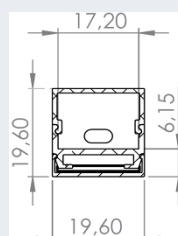
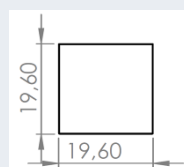
- 1) HS-ALP006-LS Estruso alluminio anodizzato
- 2) HS-OPAL-006-LS oppure HS-OPAL-010-FI opalescente satinato
- 3) HS-SETR-006-LS oppure HS-SETR-010-FI semitrasparente satinato
- 4) HS-TRAN-006-LS PMMA trasparente
- 5) HS-CAP-006-LS Tappo chiuso
- 6) HS-CAP-106-LS Tappo con foro passaggio cavi
- 7) HS-CLIP-006-LS Clip fissaggio a muro

US-ALP007 Profilo per montaggio superficiale



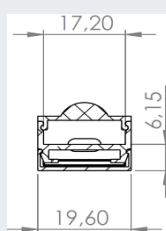
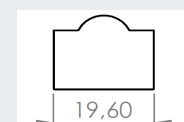
- 1) HS-ALP007-LS Estruso alluminio anodizzato
- 2) HS-ALP008-LS Fondello alluminio anodizzato
- 3) HS-OPAL-007-LS PMMA diffusore opalescente satinato
- 4) HS-SETR-007-LS PMMA diffusore semitrasparente satinato
- 5) HS-CAP-007-LS Tappo chiuso
- 6) HS-CAP-107-LS Tappo con foro passaggio cavi

US-ALP008 Profilo per montaggio superficiale



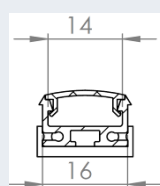
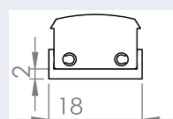
- 1) HS-ALP007-LS Estruso alluminio anodizzato
- 2) HS-ALP008-LS Fondello alluminio anodizzato
- 3) HS-OPAL-008-LS PMMA diffusore opalescente satinato
- 4) HS-SETR-008-LS PMMA diffusore semitrasparente satinato
- 5) HS-CAP-008-LS Tappo chiuso
- 6) HS-CAP-108-LS Tappo con foro passaggio cavi

US-ALP009 Profilo per montaggio superficiale



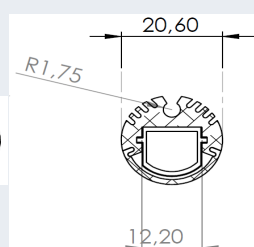
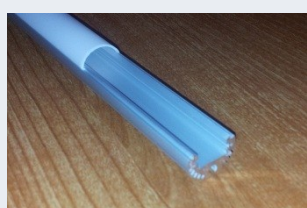
- 1) HS-ALP007-LS Estruso alluminio anodizzato
- 2) HS-ALP008-LS Fondello alluminio anodizzato
- 3) HS-TRAS-009-LS PMMA diffusore trasparente
- 5) HS-CAP-009-LS Tappo chiuso
- 6) HS-CAP-109-LS Tappo con foro passaggio cavi

US-ALP010 Profilo slim in alluminio lineare



- 1) HS-ALP010-FI Estruso alluminio anodizzato
- 2) HS-SETR-010-FI PMMA diffusore semitrasparente satinato
- 3) HS-TRAS-010-FI PMMA diffusore trasparente
- 4) HS-CAP-010-FI Tappo chiuso
- 5) HS-CAP-110-FI Tappo con foro passaggio cavi
- 6) HS-CLIP-010-FI Clip fissaggio a muro

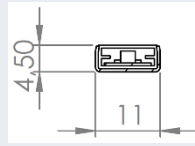
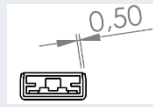
US-ALP011 Profilo tondo in alluminio.



- 1) HS-ALP011-LS Estruso alluminio anodizzato
- 2) HS-OPAL-011-LS PMMA diffusore opalescente satinato
- 3) HS-SETR-011-LS PMMA diffusore semitrasparente satinato
- 4) HS-TRAN-011-LS PMMA trasparente
- 5) HS-CAP-011-LS Tappo chiuso
- 6) HS-CAP-111-LS Tappo con foro passaggio cavi

Profili in Alluminio

US-ALP012 Profilo in alluminio 10mm per fissaggio

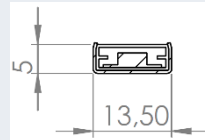
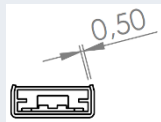


1) **HS-1010**

Estruso alluminio anodizzato 10mm

Compatibile con stripled 3528 IP65 Lunghezza standard 3,10mt

US-ALP013 Profilo in alluminio 12mm per fissaggio



1) **HS-1212**

Estruso alluminio anodizzato 12mm

Compatibile con stripled 5050 IP65 Lunghezza standard 3,10mt

Remark

- Lunghezza standard: 2mt/pezzo per tutti i codici tranne US-ALP012 e US-ALP013 che vengono a barre di 3,10mt
- Tappi terminali con foro di passaggio cavi (COD. HS-CAP-XXX-YY) e clip trasparenti di fissaggio muro (COD: HS-CLIP-XXX-YY).
- Diffusore in polimetacrilato di metile PMMA, Opalino, Semi-trasparente e Trasparente.
- Superficie di alluminio in Alluminio Anodizzato.